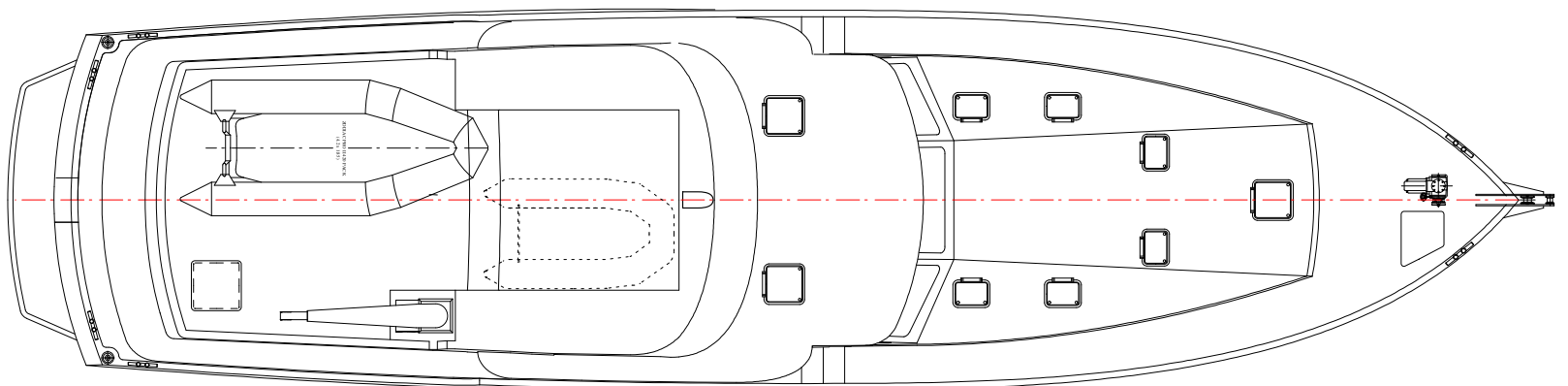
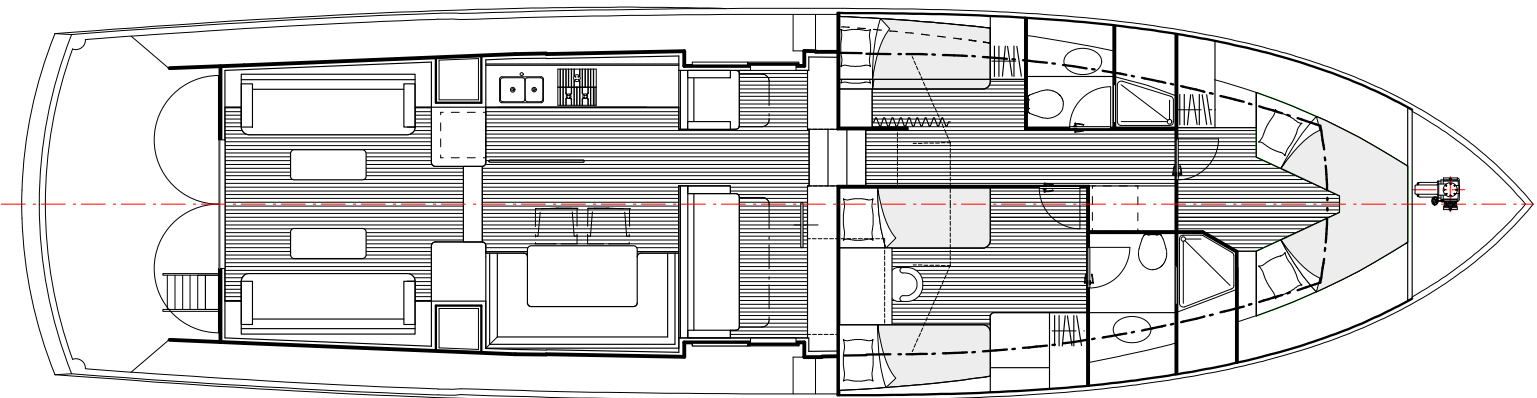
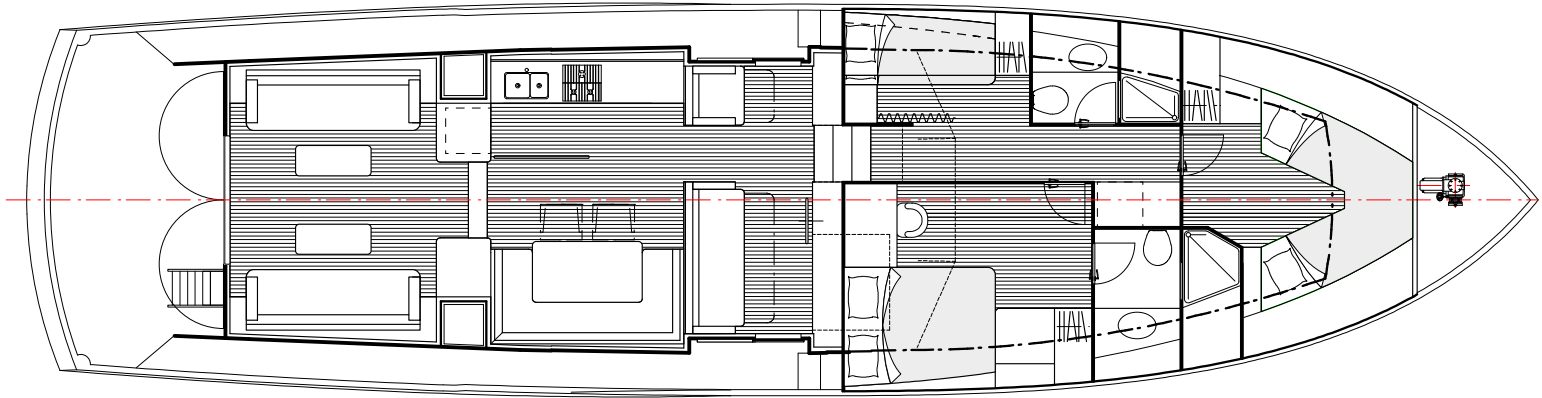
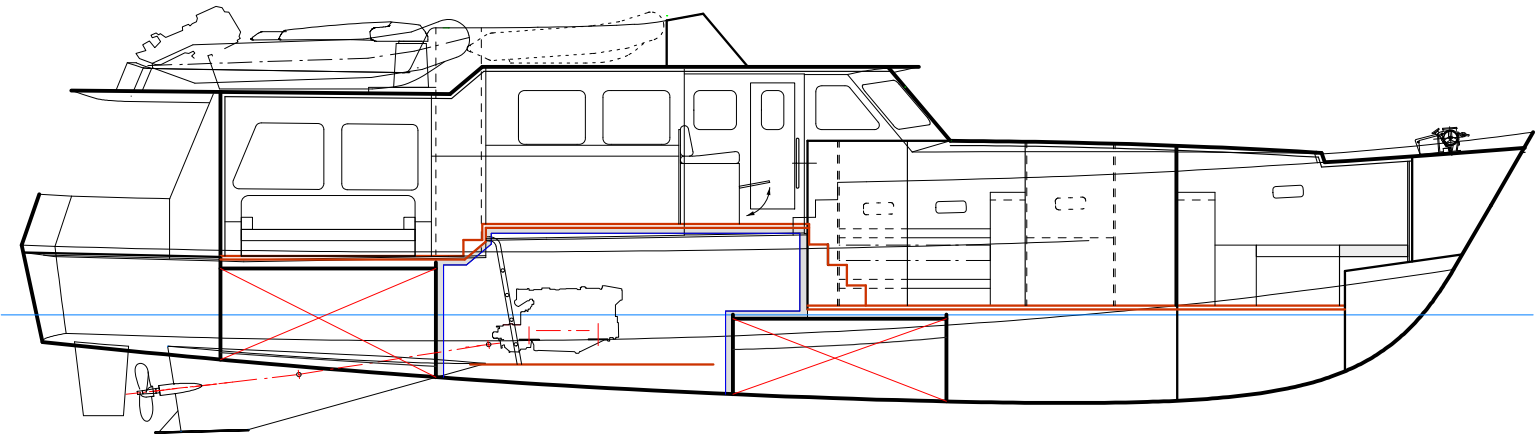
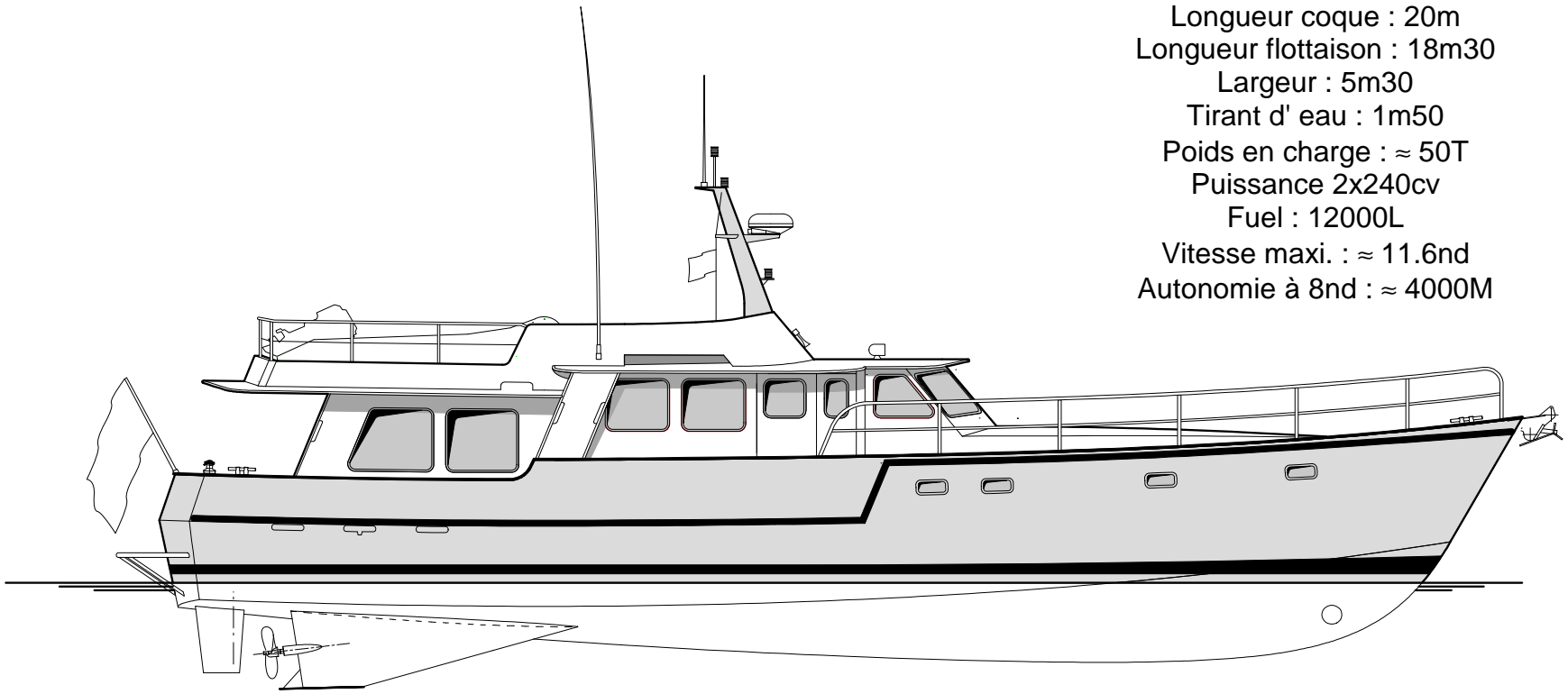


**Projet Trawler 20m Long Range de Mr MARTIN**

Longueur coque : 20m  
Longueur flottaison : 18m30  
Largeur : 5m30  
Tirant d' eau : 1m50  
Poids en charge :  $\approx$  50T  
Puissance 2x240cv  
Fuel : 12000L  
Vitesse maxi. :  $\approx$  11.6nd  
Autonomie à 8nd :  $\approx$  4000M



Architectes : JOUBERT - NIVELT

0 1 2 3 4 5m